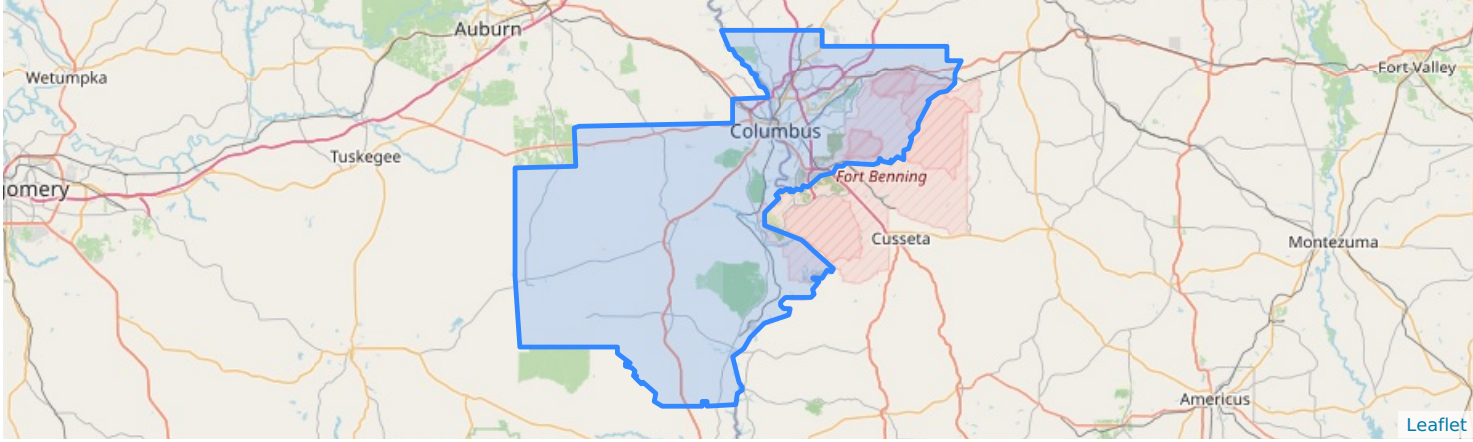
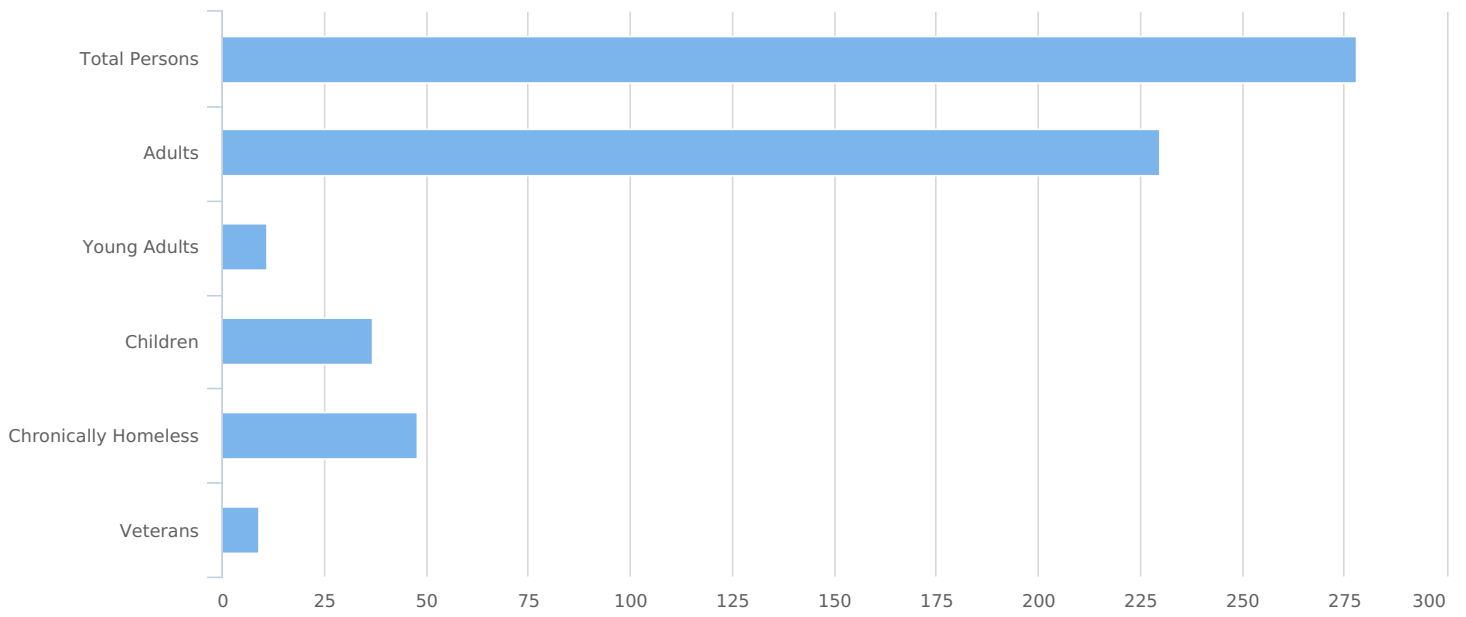


Count:	Muscogee Russell GA PIT Count 2026	Geography:	All Geographies
Created by:	FREY,PAT	Created on:	04/14/2026 1:37 PM

## Summary

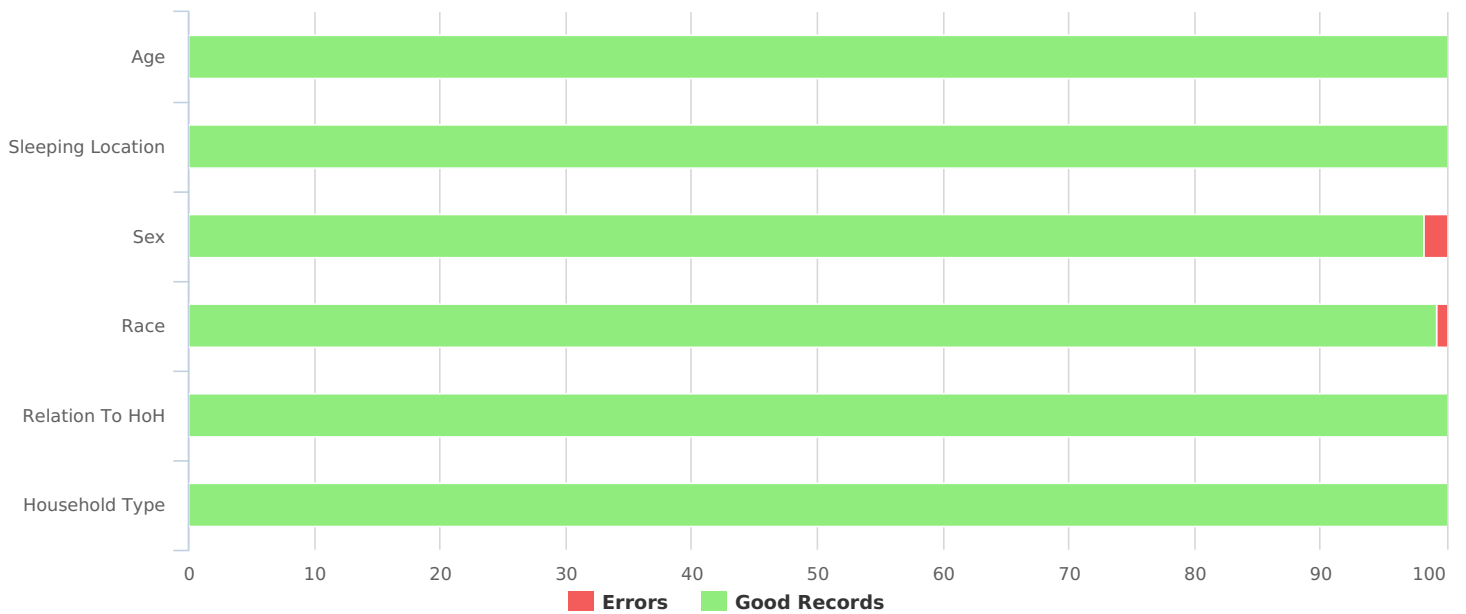


Total number of persons	278
Number of children (under age 18)	37
Number of youth (age 18 to 24)	11
Number of adults (age 25 to 34)	41
Number of adults (age 35 to 44)	62
Number of adults (age 45 to 54)	67
Number of adults (age 55 to 64)	38
Number of adults (age 65 or older)	22
Observed age 25 or older	0
Unknown Age	0
Chronically Homeless	48
Veterans	9



### Data Quality Checks

Persons Missing Age Information	0
Persons Missing Sleeping Location	0
Persons Missing Sex	5
Persons Missing Race	2
Persons Missing Relation to HoH	0
Persons with Unknown Household Type	0



## All Households

### Households with at Least One Adult and One Child

#### Household and Person Breakdown

Total number of households	17
Total number of persons	54
Number of children (under age 18)	37
Number of youth (age 18 to 24)	2
Number of adults (age 25 to 34)	6
Number of adults (age 35 to 44)	6
Number of adults (age 45 to 54)	3
Number of adults (age 55 to 64)	0
Number of adults (age 65 or older)	0
Observed age 25 or older	0

#### Sex

Female	33
Male	21

#### Race

American Indian, Alaska Native, or Indigenous	0
American Indian, Alaska Native, or Indigenous & Hispanic/Latina/e/o	0
Asian or Asian American	0
Asian or Asian American & Hispanic/Latina/e/o	0
Black, African American, or African	35
Black, African American, or African & Hispanic/Latina/e/o	0
Hispanic/Latina/e/o	5
Middle Eastern or North African	0
Middle Eastern or North African & Hispanic/Latina/e/o	0
Native Hawaiian or Pacific Islander	0
Native Hawaiian or Pacific Islander & Hispanic/Latina/e/o	0
White	14
White & Hispanic/Latina/e/o	0
Multi-Racial & Hispanic/Latina/e/o	0
Multiple Races (not Hispanic/Latina/e/o)	0

#### Chronically Homeless

Total number of households	1
Total number of persons	4

# Households without Children

## Household and Person Breakdown

Total number of households	223
Total number of persons	224
Number of youth (age 18 to 24)	9
Number of adults (age 25 to 34)	35
Number of adults (age 35 to 44)	56
Number of adults (age 45 to 54)	64
Number of adults (age 55 to 64)	38
Number of adults (age 65 or older)	22
Observed age 25 or older	0

## Sex

Female	81
Male	138

## Race

American Indian, Alaska Native, or Indigenous	5
American Indian, Alaska Native, or Indigenous & Hispanic/Latina/e/o	0
Asian or Asian American	0
Asian or Asian American & Hispanic/Latina/e/o	0
Black, African American, or African	100
Black, African American, or African & Hispanic/Latina/e/o	1
Hispanic/Latina/e/o	6
Middle Eastern or North African	0
Middle Eastern or North African & Hispanic/Latina/e/o	0
Native Hawaiian or Pacific Islander	1
Native Hawaiian or Pacific Islander & Hispanic/Latina/e/o	0
White	102
White & Hispanic/Latina/e/o	0
Multi-Racial & Hispanic/Latina/e/o	0
Multiple Races (not Hispanic/Latina/e/o)	7

## Chronically Homeless

Total number of persons	44
-------------------------	----

# Households with Only Children

## Household and Person Breakdown

Total number of households	0
Total number of children (persons under age 18)	0

## Sex

Female	0
Male	0

## Race

American Indian, Alaska Native, or Indigenous	0
American Indian, Alaska Native, or Indigenous & Hispanic/Latina/e/o	0
Asian or Asian American	0
Asian or Asian American & Hispanic/Latina/e/o	0
Black, African American, or African	0
Black, African American, or African & Hispanic/Latina/e/o	0
Hispanic/Latina/e/o	0
Middle Eastern or North African	0
Middle Eastern or North African & Hispanic/Latina/e/o	0
Native Hawaiian or Pacific Islander	0
Native Hawaiian or Pacific Islander & Hispanic/Latina/e/o	0
White	0
White & Hispanic/Latina/e/o	0
Multi-Racial & Hispanic/Latina/e/o	0
Multiple Races (not Hispanic/Latina/e/o)	0

## Chronically Homeless

Total number of persons	0
-------------------------	---

## Veteran Households

### Veteran Households with at Least One Adult and One Child

#### Household and Person Breakdown

Total number of households	0
Total number of persons	0
Total number of Veterans	0

#### Sex (Veterans Only)

Female	0
Male	0

#### Race (Veterans Only)

American Indian, Alaska Native, or Indigenous	0
American Indian, Alaska Native, or Indigenous & Hispanic/Latina/e/o	0
Asian or Asian American	0
Asian or Asian American & Hispanic/Latina/e/o	0
Black, African American, or African	0
Black, African American, or African & Hispanic/Latina/e/o	0
Hispanic/Latina/e/o	0
Middle Eastern or North African	0
Middle Eastern or North African & Hispanic/Latina/e/o	0
Native Hawaiian or Pacific Islander	0
Native Hawaiian or Pacific Islander & Hispanic/Latina/e/o	0
White	0
White & Hispanic/Latina/e/o	0
Multi-Racial & Hispanic/Latina/e/o	0
Multiple Races (not Hispanic/Latina/e/o)	0

#### Chronically Homeless

Total number of households	0
Total number of persons	0

## Veteran Households without Children

### Household and Person Breakdown

Total number of households	8
Total number of persons	9
Total Number of Veterans	9

### Sex (Veterans Only)

Female	1
Male	8

### Race (Veterans Only)

American Indian, Alaska Native, or Indigenous	1
American Indian, Alaska Native, or Indigenous & Hispanic/Latina/e/o	0
Asian or Asian American	0
Asian or Asian American & Hispanic/Latina/e/o	0
Black, African American, or African	4
Black, African American, or African & Hispanic/Latina/e/o	0
Hispanic/Latina/e/o	0
Middle Eastern or North African	0
Middle Eastern or North African & Hispanic/Latina/e/o	0
Native Hawaiian or Pacific Islander	0
Native Hawaiian or Pacific Islander & Hispanic/Latina/e/o	0
White	4
White & Hispanic/Latina/e/o	0
Multi-Racial & Hispanic/Latina/e/o	0
Multiple Races (not Hispanic/Latina/e/o)	0

### Chronically Homeless

Total number of households	1
Total number of persons	1

## Youth Households

### Unaccompanied Youth Households

#### Household and Person Breakdown

Total number of unaccompanied youth households	9
Total number of unaccompanied youth	9
Number of unaccompanied youth (under age 18)	0
Number of unaccompanied youth (age 18 to 24)	9

#### Sex

Female	6
Male	3

#### Race

American Indian, Alaska Native, or Indigenous	0
American Indian, Alaska Native, or Indigenous & Hispanic/Latina/e/o	0
Asian or Asian American	0
Asian or Asian American & Hispanic/Latina/e/o	0
Black, African American, or African	4
Black, African American, or African & Hispanic/Latina/e/o	0
Hispanic/Latina/e/o	1
Middle Eastern or North African	0
Middle Eastern or North African & Hispanic/Latina/e/o	0
Native Hawaiian or Pacific Islander	0
Native Hawaiian or Pacific Islander & Hispanic/Latina/e/o	0
White	4
White & Hispanic/Latina/e/o	0
Multi-Racial & Hispanic/Latina/e/o	0
Multiple Races (not Hispanic/Latina/e/o)	0

#### Chronically Homeless

Total number of persons	0
-------------------------	---

# Parenting Youth

## Household and Person Breakdown

Total number of parenting youth households	2
Total number of persons in parenting youth households	7
Total Parenting Youth (youth parents only)	2
Total Children in Parenting Youth Households	5
Number of parenting youth under age 18	0
Children in households with parenting youth under age 18	0
Number of parenting youth age 18 to 24	2
Children in households with parenting youth age 18 to 24	5

## Sex (Youth Parents Only)

Female	2
Male	0

## Race (Youth Parents Only)

American Indian, Alaska Native, or Indigenous	0
American Indian, Alaska Native, or Indigenous & Hispanic/Latina/e/o	0
Asian or Asian American	0
Asian or Asian American & Hispanic/Latina/e/o	0
Black, African American, or African	2
Black, African American, or African & Hispanic/Latina/e/o	0
Hispanic/Latina/e/o	0
Middle Eastern or North African	0
Middle Eastern or North African & Hispanic/Latina/e/o	0
Native Hawaiian or Pacific Islander	0
Native Hawaiian or Pacific Islander & Hispanic/Latina/e/o	0
White	0
White & Hispanic/Latina/e/o	0
Multi-Racial & Hispanic/Latina/e/o	0
Multiple Races (not Hispanic/Latina/e/o)	0

## Chronically Homeless

Total number of households	0
Total number of persons	0

## Additional Homeless Populations (Adults Only)

Adults with a Serious Mental Illness	45
Adults with a Substance Use Disorder	20
Adults with HIV/AIDS	3
Adult Survivors of Domestic Violence (optional)	32

